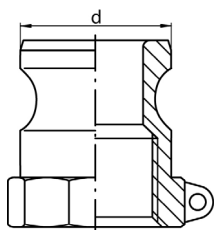


Spojky CAMLOCK
Typ A

Vsuvka spojky CAMLOCK s vnitřním závitem BSP nebo NPT


hliník



mosaz



nerezová ocel AISI 316



polypropylen

rozměr				index (hliník)	index (mosaz)	index (nerez AISI 316)	index (polypropylen)
DN [mm]	spojka [cou]	d [mm]	závit [cou]				
15	1/2	~ 24	1/2 BSP	AC-A-050-A AC-A-050-AX	AC-A-050-B AC-A-050-BX	AC-A-050-SS AC-A-050-SSX	- -
15	1/2	~ 24	1/2 NPT	- -	- -	AC-A-050-SS-NPT AC-A-050-SSX-NPT	- -
20	3/4	32,1	1/2 BSP	- -	- -	- -	AC-A-050-P -
20	3/4	32,1	3/4 BSP	AC-A-075-A AC-A-075-AX	AC-A-075-B AC-A-075-BX	AC-A-075-SS AC-A-075-SSX	AC-A-075-P -
20	3/4	32,1	3/4 NPT	AC-A-075-A-NPT AC-A-075-AX-NPT	- -	AC-A-075-SS-NPT AC-A-075-SSX-NPT	- -
25	1	36,7	1.1/4 BSP	- -	- -	- -	AC-A-125-P -
25	1	36,7	1 BSP	AC-A-100-A AC-A-100-AX	AC-A-100-B AC-A-100-BX	AC-A-100-SS AC-A-100-SSX	AC-A-100-P -
25	1	36,7	1 NPT	AC-A-100-A-NPT AC-A-100-AX-NPT	- -	AC-A-100-SS-NPT AC-A-100-SSX-NPT	- -
32	1.1/4	45,5	1.1/4 BSP	AC-A-125-A AC-A-125-AX	AC-A-125-B AC-A-125-BX	AC-A-125-SS AC-A-125-SSX	- -
32	1.1/4	45,5	1.1/4 NPT	- -	- -	AC-A-125-SS-NPT AC-A-125-SSX-NPT	- -
40	1.1/2	53,4	1.1/2 BSP	AC-A-150-A AC-A-150-AX	AC-A-150-B AC-A-150-BX	AC-A-150-SS AC-A-150-SSX	AC-A-150-P -
50	2	63	2 BSP	AC-A-200-A AC-A-200-AX	AC-A-200-B AC-A-200-BX	AC-A-200-SS AC-A-200-SSX	AC-A-200-P -
50	2	63	2 NPT	- -	- -	AC-A-200-SS-NPT AC-A-200-SSX-NPT	- -
50	2	63	3 BSP	AC-A-200-300-A AC-A-200-300-AX	- -	- -	- -
65	2.1/2	75,8	2.1/2 BSP	AC-A-250-A AC-A-250-AX	AC-A-250-B AC-A-250-BX	AC-A-250-SS AC-A-250-SSX	- -
80	3	91,5	2 BSP	- AC-A-300-200-AX	- -	- -	- -
80	3	91,5	3 BSP	AC-A-300-A AC-A-300-AX	AC-A-300-B AC-A-300-BX	AC-A-300-SS AC-A-300-SSX	AC-A-300-P -
80	3	91,5	3 NPT	AC-A-300-A-NPT AC-A-300-AX-NPT	- -	AC-A-300-SS-NPT AC-A-300-SSX-NPT	- -
80	3	91,5	4 BSP	- AC-A-300-400-AX	- -	- -	- -
100	4	119,5	3 BSP	- AC-A-400-300-AX	- -	- -	- -
100	4	119,5	4 BSP	AC-A-400-A AC-A-400-AX	AC-A-400-B AC-A-400-BX	AC-A-400-SS AC-A-400-SSX	AC-A-400-P -
100	4	119,5	4 NPT	- -	- -	AC-A-400-SS-NPT AC-A-400-SSX-NPT	- -
100	4	119,5	6 BSP	- AC-A-400-600-AX	- -	- -	- -
125	5	145,6	5 BSP	AC-A-500-A AC-A-500-AX	AC-A-500-B AC-A-500-BX	AC-A-500-SS AC-A-500-SSX	- -
150	6	176	4 BSP	- AC-A-600-400-AX	- -	- -	- -
150	6	176	6 BSP	AC-A-600-A AC-A-600-AX	AC-A-600-B AC-A-600-BX	AC-A-600-SS AC-A-600-SSX	- -